

# MARQUET

RHODES SYDNEY

# & MARY

LIVE AN ELEVATED LIFE IN  
A VIBRANT WATERFRONT SUBURB

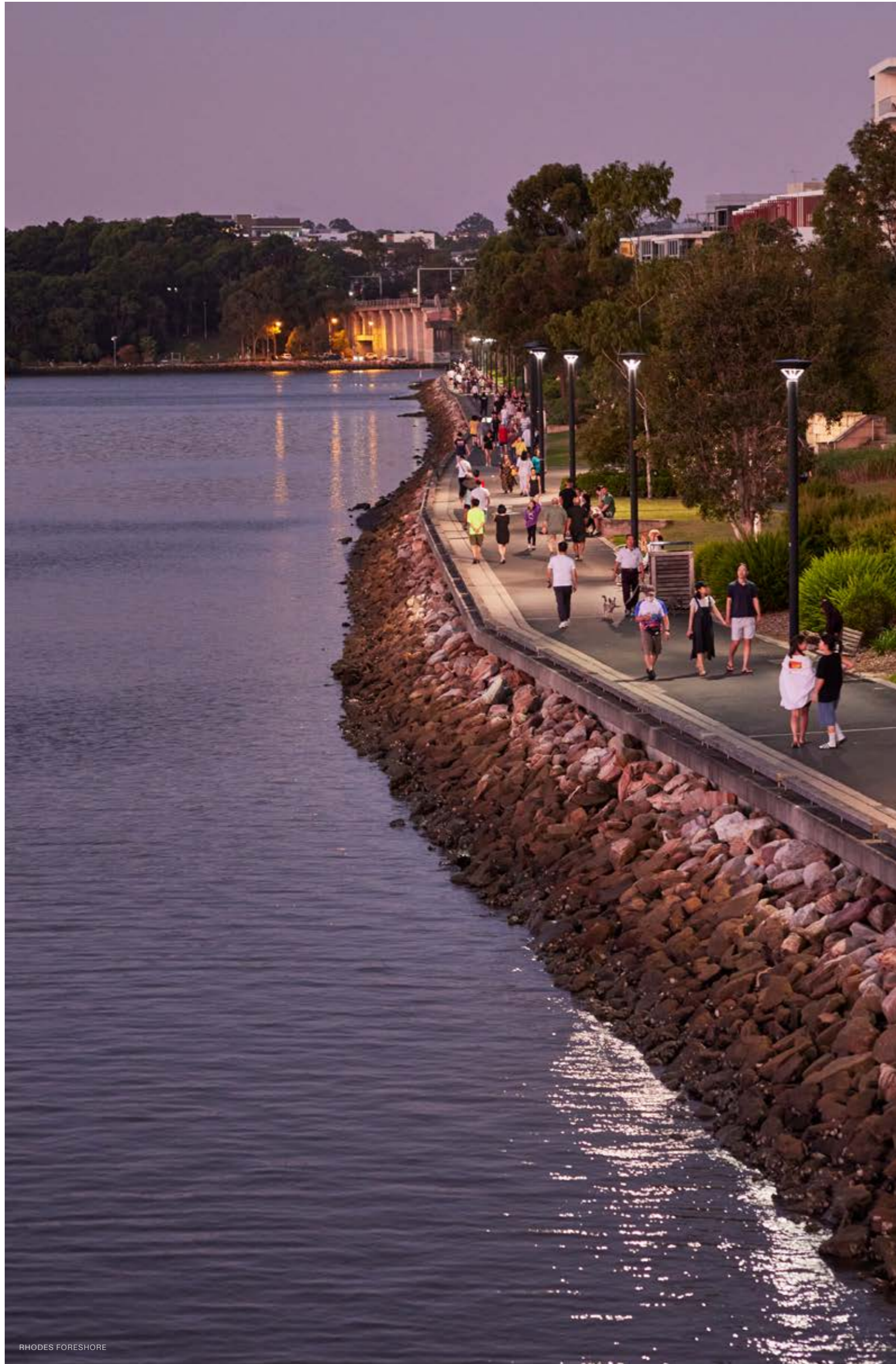
Situated in the geographic heart of Sydney, Rhodes offers every convenience of modern living right at your doorstep. Nestled on a coveted peninsula, explore a dynamic precinct of shopping, dining, leisure and transport, all within a tree-lined, walkable neighbourhood.

Marquet & Mary by Deicorp presents a unique opportunity to make this exciting neighbourhood your home. A collection of one, two and three bedroom apartments are being created, thoughtfully designed for modern living and showcasing spectacular views. With Marquet & Mary's prime location delivering everything you need to live, work and play, this is a rare chance to live an elevated lifestyle.

# MARQUET & MARY

RHODES SYDNEY





RHODES FORESHORE

EXPERIENCE THE  
EVOLUTION OF RHODES

PAGE 06

ELEVATE YOUR  
STANDARD OF LIVING

PAGE 14

RISE ABOVE  
THE ORDINARY

PAGE 36

DISCOVER A  
NEW ENERGY

PAGE 46

INSPIRE THE PURSUIT  
OF EXCELLENCE

PAGE 52

# EXPERIENCE

## A SUBURB THAT NEVER SITS STILL

Rhodes is a living, breathing suburb that continues to evolve over time. Once a hard-working, industrial centre, today Rhodes is unrecognisable from its humble beginnings. As industry moved on in the 1980s, the scene was set for Rhodes' remarkable transformation into a thriving residential, recreational, retail and commercial destination.

Bringing to life a vision more than 20 years in the making, Rhodes has become an enviable blend of contemporary residential spaces, abundant greenery and foreshore, bustling retail centres, and a transport hub that seamlessly connects the suburb to the rest of the city.

# THE EVOLUTION OF RHODES



# LIVE LIFE BY THE WATER



MCILWAINE PARK FORESHORE

# TRANSFORMED TO AN ENVIABLE LIFESTYLE

## FROM ANCIENT SETTLEMENTS TO URBAN INDUSTRY

The Rhodes peninsula was once the ancestral land of the Wangal Clan, believed to have lived in the region for at least 15,000 years. Later, during much of the 20th century, industry dominated the area. It was home to a mix of businesses including an ironworks, flour mill, sawmill, timber merchants, pipeworks and chemical works. Once industry moved away, the site was identified as a prime location to be transformed into the highly liveable residential and commercial community we see today.



RHODES CIRCA 1970 PHOTO COURTESY OF THE CITY OF CANAL BAY



MEADOWBANK RAILWAY BRIDGE

## AN URBAN OASIS

Surrounded by water on three sides, this unique peninsula feels like an oasis in the city, but with all the ease and comfort of urban living. Embrace the lifestyle afforded by Rhodes' special location, and watch the suburb continue to evolve as the plan for the next two decades unfolds.



RHODES FORESHORE



MARQUET & MARY  
RHODES SYDNEY

NORTH SYDNEY

LAVENDER BAY

BALMAIN

SYDNEY CBD

NORTH RYDE

GREENWICH

DRUMMOYNE

ABBOTSFORD

GLADESVILLE

HUNTERS HILL

CABARITA

BREAKFAST POINT

PUTNEY

HOME BUSH

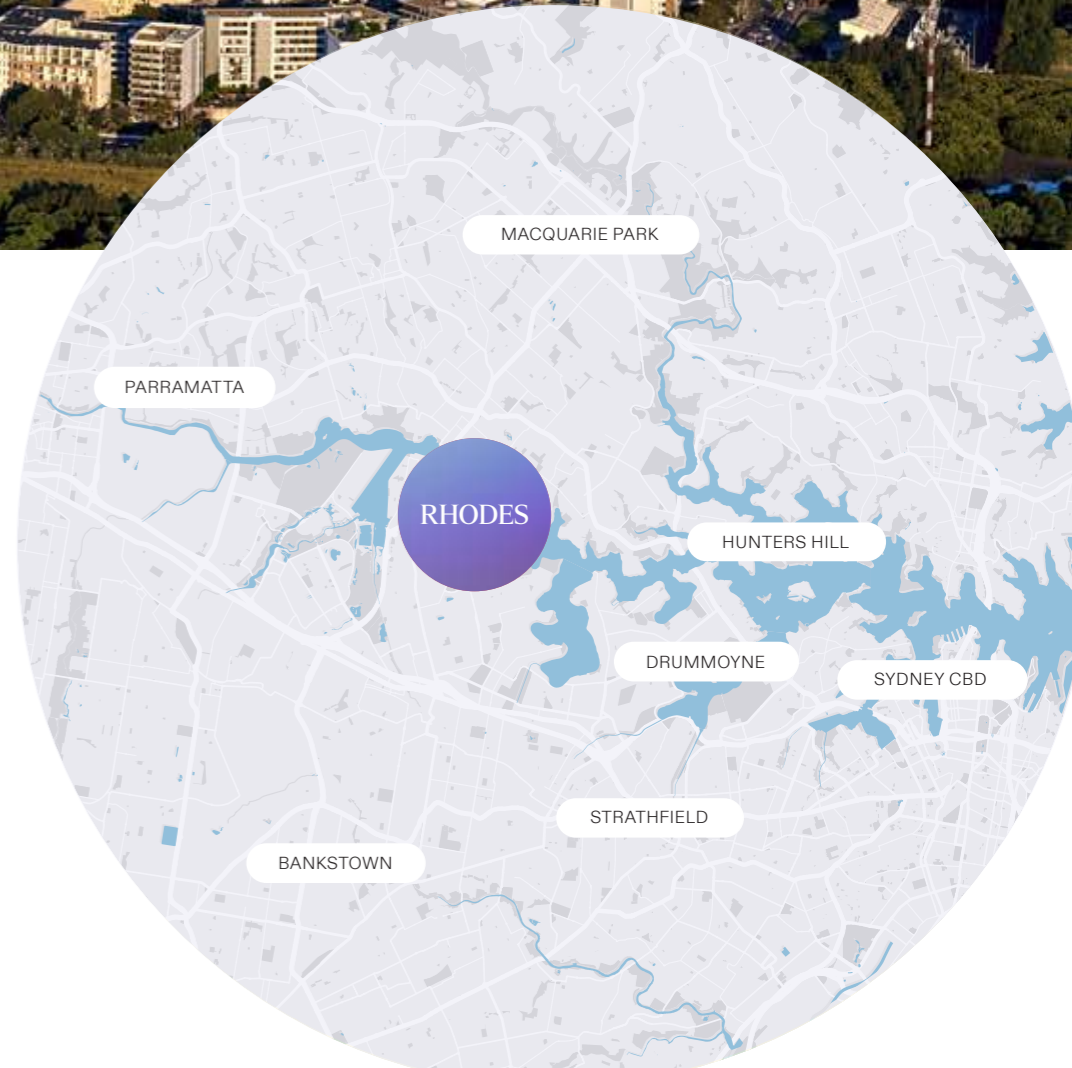
MEADOWBANK

CONCORD

RHODES PENINSULA

WENTWORTH POINT

AERIAL VIEW OF RHODES



MACQUARIE PARK

PARRAMATTA

RHODES

HUNTERS HILL

DRUMMOYNE

SYDNEY CBD

STRATHFIELD

BANKSTOWN

# COVETED WATERFRONT LIVING

## AT THE CENTRE OF IT ALL

### YOUR EXCLUSIVE WATERFRONT SUBURB

Experience the rarity of waterfront living at Marquet & Mary in Rhodes. Located in the geographical heart of Sydney, enjoy seamless access to the city and revel in breathtaking water views, direct access to water activities, and a prestigious, serene address that embodies the ultimate in waterfront living.



# ELEVATE

## AN ARCHITECTURAL GEM

Representing the pinnacle of high-rise design, Marquet & Mary is poised to become a distinguished architectural landmark. Drawing inspiration from global icons like New York's Flatiron building, Marquet & Mary embodies urban luxury in Rhodes.

Crafted by the acclaimed Fender Katsalidis, this mixed-use tower was selected after winning a Design Excellence Competition. The jury praised the firm's sophisticated and thoughtful approach, celebrating the harmonious apartment layouts, the memorable tower silhouette, and the meticulous attention to detail evident in the podium's central courtyard, designed to invite natural light and ventilation, among other exceptional design features.

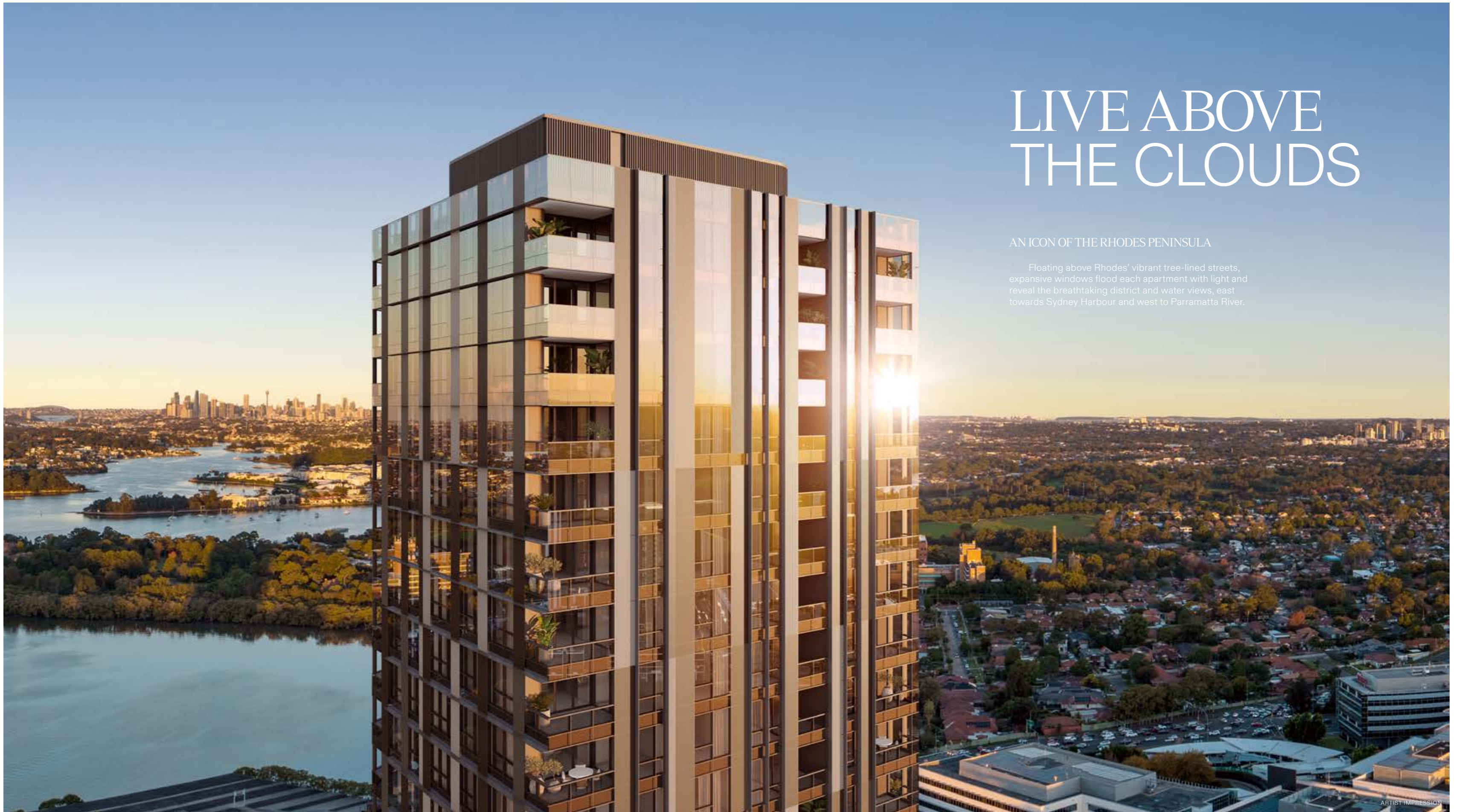
# YOUR STANDARD OF LIVING



# LIVE ABOVE THE CLOUDS

## AN ICON OF THE RHODES PENINSULA

Floating above Rhodes' vibrant tree-lined streets, expansive windows flood each apartment with light and reveal the breathtaking district and water views, east towards Sydney Harbour and west to Parramatta River.



ARTIST IMPRESSION



# PERFECTLY POSITIONED AT MARQUET & MARY

## ELEVATE YOUR LIFESTYLE

Perfectly positioned on the corner of Marquet and Mary streets, the tower's sleek, glassy silhouette reaches into the sky where you'll find intelligently designed one, two and three bedroom apartments, all finished to the highest standards.

Clever design at ground level grants laneway access to the bustling Rhodes Central retail precinct and Rhodes train station. This delivers on Deicorp's philosophy of creating well-connected communities that are accessible and convenient.

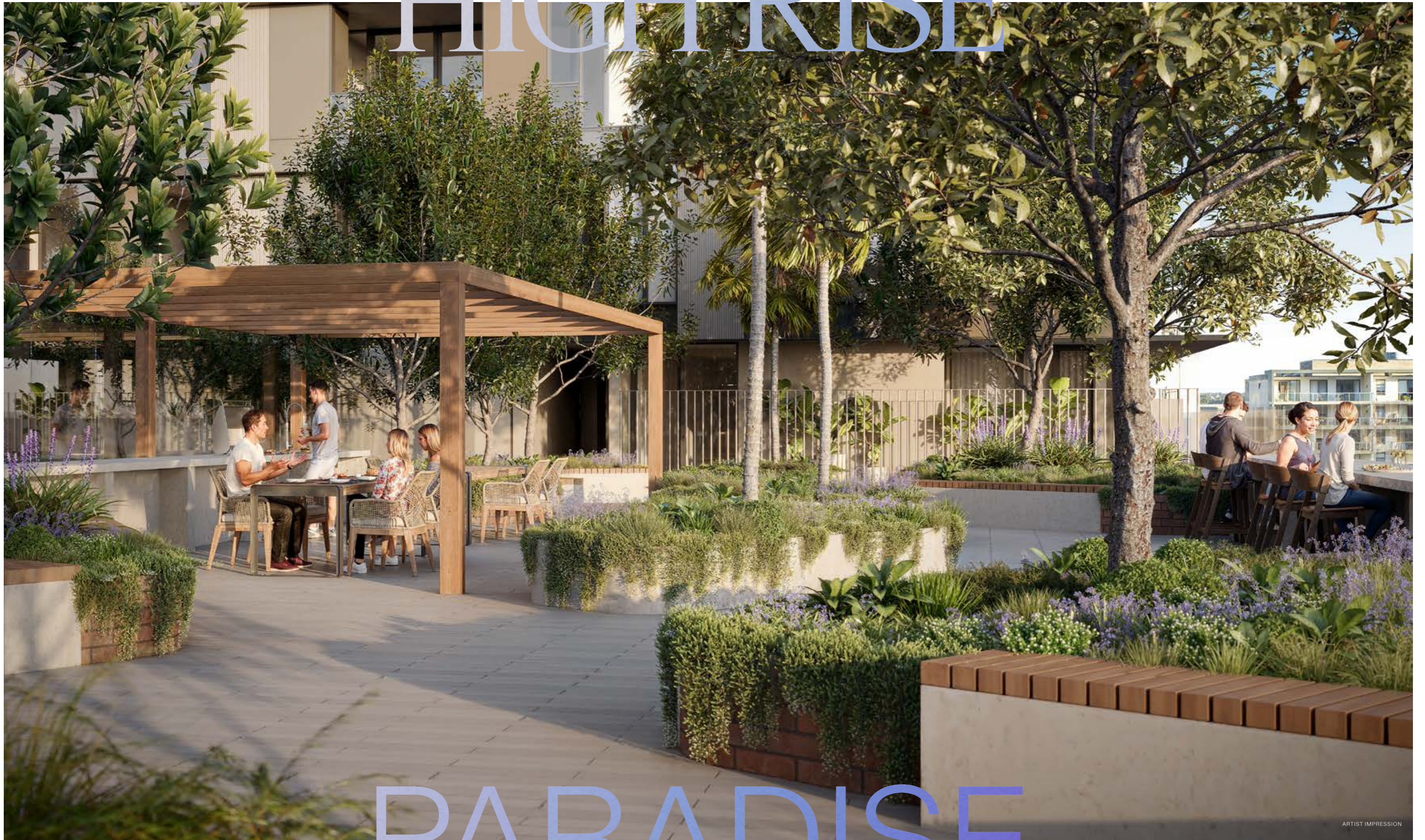
# DESIGNED FROM THE GROUND UP



## AT HOME IN SYDNEY'S MOST LIVEABLE SUBURB

The podium at the base of the tower provides a human-scaled design at street level. Built with materials that reference the masonry and brickwork heritage of inter-war bungalows historically found in the suburb, the podium will feature four levels of commercial space, along with a rooftop communal space for residents.

# HIGHRISE



# PARADISE

ARTIST IMPRESSION



ARTIST IMPRESSION

# WELCOME HOME

## EFFORTLESS ENTERTAINING

The functional design of the kitchen features ample bench space and storage, and is fitted with high-end European appliances. Whether preparing a meal for your family or entertaining friends, the stylish kitchen will quickly become the heart of your new home.



RHODES WATERSIDE  
TRAY - HOUSE, OTTOMAN - IKEA

# A PERFECT WAY TO ENJOY THE VIEW

## A HARMONIOUS BLEND OF FORM AND FUNCTION

The inviting living spaces in Marquet & Mary, framed by those incredible views, encourage you to relax and unwind. While there's plenty to keep you busy in Rhodes and neighbouring surrounds, you'll appreciate the sense of calm you feel when you walk through the door.



RHODES WATERSIDE  
THROW – ADAIRS, VASE – IKEA

ARTIST IMPRESSION



ARTIST IMPRESSION

# THE LIVING SANCTUARY

## INDOOR-OUTDOOR ESCAPE

Experience living and dining spaces bathed in natural light that flow naturally to generous sun-drenched balconies, creating a perfect blend of indoor and outdoor areas. The thoughtfully designed layout ensures every gathering, whether intimate or grand, feels natural and welcoming.



# THE ULTIMATE PLACE TO RELAX AND UNWIND



## SOOTHING & SERENE

When it's time to recharge from the hustle and bustle of city life, the bedrooms at Marquet & Mary feel like a sanctuary, designed to promote a restful night's sleep.

The sleek bathrooms have been designed to maximise space, with a layout that is both practical and comfortable. The clean lines and luxurious finishes create a feeling of tranquillity.

# YOUR RETREAT



## A PRIVATE OASIS

Experience urban sophistication and serene living at Marquet & Mary. Enjoy lush balconies and entertaining spaces that offer a tranquil oasis in the heart of Rhodes, with stunning views of the city, nature, and harbour.

# IN THE SKY

ARTIST IMPRESSION

# AN UNBEATABLE LOCALE

## GRAND ENTRANCE, VIBRANT CONNECTIONS

The entrance to Marquet & Mary will be elegant and grand, with surrounding landscaping designed to enhance Rhodes' tree-lined streetscape. Enjoy convenient access to Rhodes Central through a vibrant pedestrian retail laneway, featuring bustling cafes, new eateries, and boutique shops for all to enjoy.



ARTIST IMPRESSION

# RISE

A PREMIER DESTINATION FOR RETAIL,  
SHOPPING & ENTERTAINMENT

When you discover the breadth of neighbourhood amenities on offer living at Marquet & Mary, you may never want to leave the peninsula again. With a seemingly endless array of retail options, all your grocery, dining, fashion, health, beauty and entertainment needs are covered.

# ABOVE THE ORDINARY



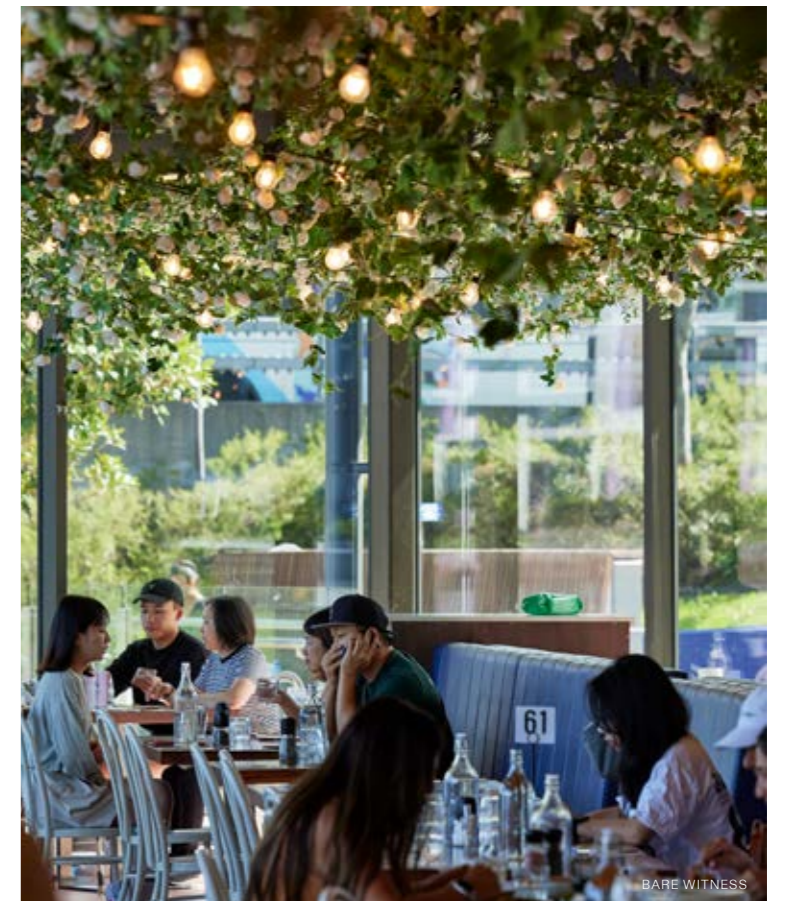


RISE ABOVE THE ORDINARY

# INDULGE IN A CULINARY ADVENTURE

## DELICIOUS DELIGHTS

With fresh takeaways, cafes, restaurants and a famous Yum Cha, you'll always have something tasty to try in Rhodes. From riverside Bare Witness and Oliveto Ristorante & Bar through to Bamboo Lane, inspired by the colourful hawker lanes, you'll find the perfect place from morning through to late night.



# SYDNEY'S MOST DESIRABLE LIFESTYLE



## WATERFRONT BLISS

Whether it's the beach, harbour or riverfront, Sydney is a city that embraces waterfront living. Often reserved for the fortunate few, Marquet & Mary opens up a once-in-a-lifetime opportunity to build a life by the water and enjoy all the advantages it offers. With stunning views in all directions, there's nothing quite like the feeling of peace and serenity as you sit by the water and take in the view. You can also get active with a walk or bike ride, or take to the water in a boat, kayak or stand-up paddle board.

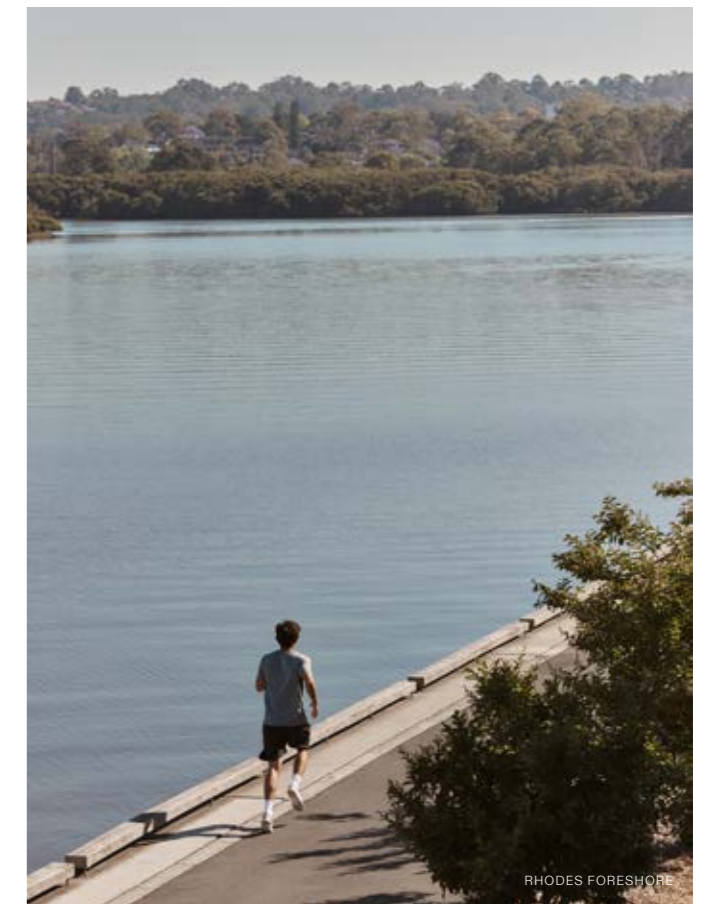
# WONDERFUL WATER VIEWS & GORGEOUS GREEN SPACES



## NOURISH YOUR MIND, BODY & SOUL

Enjoy a range of outdoor spaces and lush green parklands, including a beautiful foreshore park and promenade where you can relax and enjoy the water views. Get your pulse racing on the 2.9km scenic network of walkways, running trails and cycling paths, or visit the local gym to stay fit and healthy.

Mcllwaine Park on the foreshore has been transformed with a new beach area, rock pools, picnic shelters, barbecues and more, making it the perfect place to get together with family and friends. With an abundance of green spaces and recreational activities, it's easy to take care of your mind, body and soul.





#### EVERYTHING AT YOUR DOORSTEP

Find everything you want in clothing, homewares, accessories and gifts, with Rhodes a one-stop shopping destination. Just a short stroll along the vibrant retail laneway at Marquet & Mary's doorstep you'll find Rhodes Central, home to a Woolworths, plus more than 55 shops and services over three levels. At Rhodes Waterside you'll discover major retailers like IKEA and Kmart, along with boutiques, specialty stores, food outlets, banks, healthcare providers and a cinema. Neighbouring DFO Homebush offers premium brand outlets at incredible prices.

# THE BEST IN RETAIL THERAPY





# DISCOVER

## CONVENIENT & CONNECTED

Ideally positioned at the centre of everything you need, Rhodes is one of Sydney's most convenient and connected suburbs. It's located almost equal distance to Sydney's two biggest CBDs - just 12km to Parramatta and under 16km to Sydney city. There's direct access to motorways, but if you'd rather not drive you're spoilt for public transport options.

You can hop on the Olympic Park ferry or catch a train for fast access to wherever you're headed. There are even cycleways to Parramatta and Sydney's CBD. It's also a short stroll across the pedestrian bridge to Wentworth Point. Childcare, schools and Concord Hospital are all within close proximity.

# A NEW ENERGY



# A GATEWAY TO SYDNEY

## TRAINS, FERRIES, BUSES AND CARS

Commuting to work? Catch a train and you'll be in Sydney CBD or Parramatta in no time. Circular Quay and Parramatta are also both just a ferry ride away, and the nearest ferry stops can be reached by bus or a 15 minute walk. Frequent bus services mean you can travel to the surrounding suburbs and beyond in a heartbeat. You can reach the major motorways in minutes by bus or car. With a new ferry wharf and upgrades to Rhodes train station planned, this transport hub is set to become even more connected.



# YOUR NEW

## SHOPPING & RETAIL

- 01. Rhodes Central Shopping Centre
- 02. Rhodes Waterside
- 03. Ikea
- 04. Woolworths
- 05. Coles & Aldi
- 06. DFO
- 07. Reading Cinema

## CAFES & RESTAURANTS

- 08. Oliveto Ristorante & Bar
- 09. Bare Witness Café
- 10. Bamboo Lane Dining
- 11. Andiamo Trattoria
- 12. Rhodes Phoenix Chinese Restaurant
- 13. Bornga Korean BBQ

## EDUCATION

- 14. Concord West Public School
- 15. Rhodes Corporate Park Child Care
- 16. Rhodes Children's Centre
- 17. Wentworth Point Public School
- 18. Marsden High School

## LEISURE & RECREATION

- 19. Rhodes Boat Ramp
- 20. Mcllwaine Park Beach
- 21. The Connection
- 22. Rhodes Foreshore Park
- 23. DSA Dragon Boat Club
- 24. Kokoda Track Memorial Walkway
- 25. Homebush Bay Corso

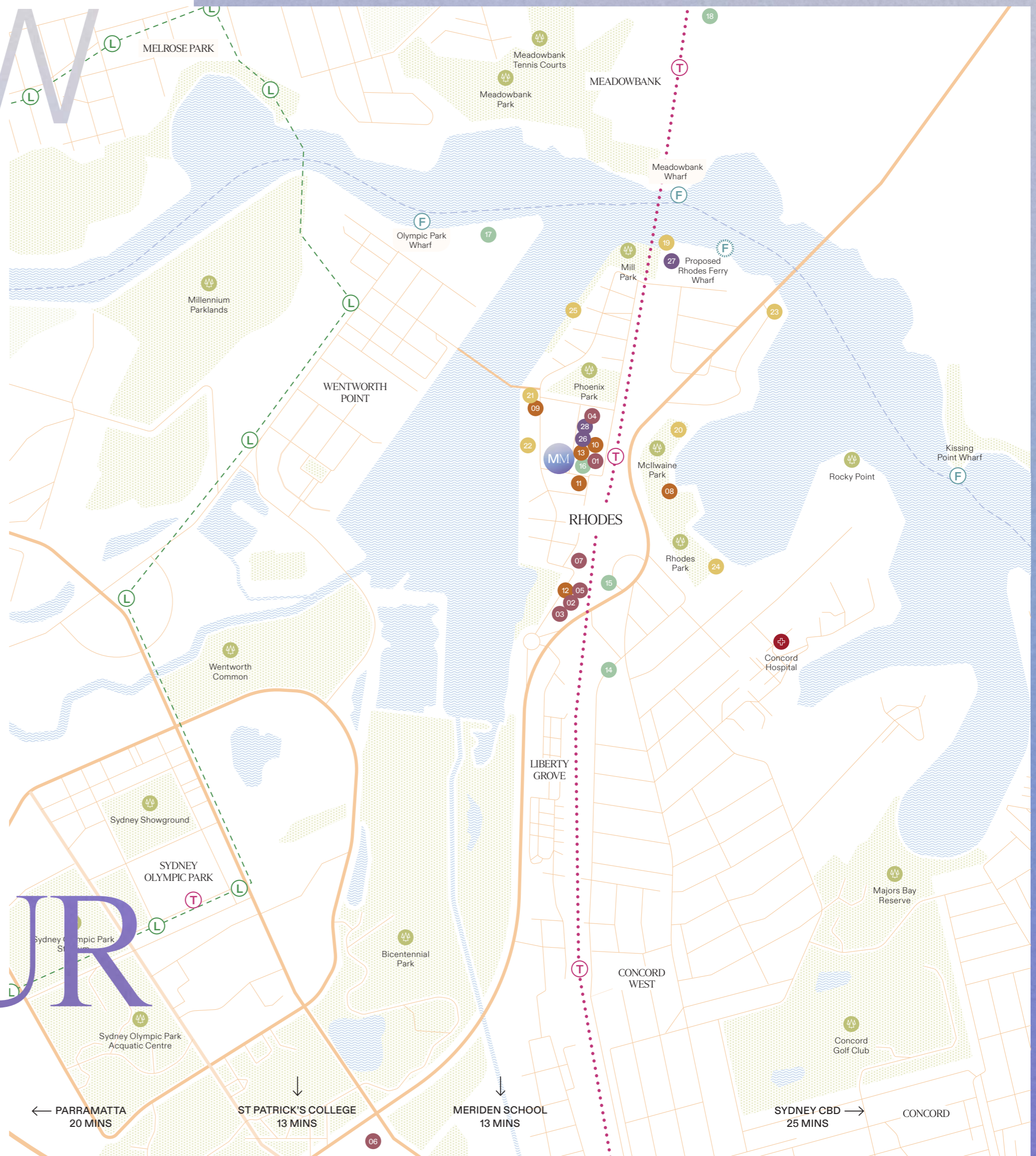
## PETS

- 26. Qpet
- 27. Petso
- 28. Bayside Animal Hospital

## TRANSPORT

- F — Ferry Line
- T — Train Line
- L — Parramatta Light Rail Stage 2

# NEIGHBOURHOOD



# INSPIRE

## A TRACK RECORD OF SUCCESS

Each of the firms working collaboratively to bring Marquet & Mary to life share a wealth of talent and experience. Experts in their fields, they have a track record of success in creating desirable, people-centred communities, and positively transforming the built environment.

Through their collaborative efforts, Marquet & Mary is poised to emerge not just as a residential destination, but as a beacon of inspiration—a testament to the transformative power of visionary design and collective expertise.

# THE PURSUIT OF EXCELLENCE



# DEICORP A LEADING DEVELOPER



## A TRUSTED NAME IN PROPERTY DEVELOPMENT

As a values-driven company, Deicorp is focused on strengthening the communities we work in. Underpinning every project is a commitment to deliver outstanding value, security, convenience and quality of life. As part of this approach, we established our charitable and sponsorship program, Deicorp Community, to help us build hope and opportunity, while creating a legacy of stronger, more resilient communities.

## DEVELOPING DESIRABLE NEW HOMES DESIGNED FOR LIVING IN THE BEST LOCATIONS ACROSS SYDNEY.

Founded in 1999, Deicorp is a privately-owned Australian property development and construction group with expertise in residential, commercial and retail property. With a commitment to securing the best sites for our projects, Deicorp is recognised as Sydney's leading builder of transport-connected developments. For our customers, this means Deicorp offers complete confidence and peace of mind, ensuring every apartment delivers outstanding value, security, convenience and quality of life.

That's why for more than two decades, Deicorp has designed, developed and delivered more than 10,000 apartments in over 40 Sydney suburbs.

Deicorp delivers an end-to-end service for purchasers with our leading construction and development industry team who work seamlessly together on every project. We manage site acquisition, planning and design, construction, sales and client care with our dedicated team of 200 industry professionals.

As a respected and successful company, Deicorp is committed to strengthening the communities we work in. It's why we established our charitable and sponsorship program – Deicorp Community, to help us build hope and opportunity, while creating a legacy of stronger, more resilient communities.

And as the first developer in NSW to be iCIRT rated, our buyers have confidence and peace of mind that they're dealing with trusted industry professionals with a strong reputation and proud track-record.



## 650 YEARS OF COMBINED INDUSTRY-LEADING EXPERIENCE



DEICORP TEAM



THE PETERSHAM PRECINCT, PETERSHAM – 357 UNITS + RSL CLUB



HYDE METROPOLITAN, SYDNEY – 170 UNITS + 4250 SQM RETAIL



TALLAWONG VILLAGE, TALLAWONG, ROUSE HILL – 987 UNITS + 9,000 SQM RETAIL

# THE DEICORP DIFFERENCE



## LAND OWNER

Deicorp Projects (Rhodes) Pty Ltd

## BUILDER

Deicorp Pty Ltd Operating with the same Builders License since 1996 #182130C

## DEVELOPER

Deicorp Property Group Pty Ltd iCIRT-Rated Company

## END-TO-END SERVICE




  
**10,000+ APARTMENTS**  
 Designed, developed and delivered.


  
**TRANSPORT CONNECTED**  
 Always walking distance to public transport.

  
**SYDNEY EXPERTS**  
 Developments in more than 40+ suburbs across Sydney.

  
**3000+ APARTMENTS**  
 Currently under construction.

  
**PROUDLY AUSTRALIAN**  
 Owned and operated developer and builder.

  
**\$3.5 BILLION PIPELINE**  
 Invested in the building and construction industry.

  
**SEAMLESS JOURNEY**  
 From sales to post-settlement and customer care.

  
**EST. 1999**  
 Track record of success with a single builder's licence.

# FENDER KATSALIDIS



CRAIG BAUDIN — PARTNER  
FENDER KATSALIDIS

## THE RENOWNED ARCHITECTS

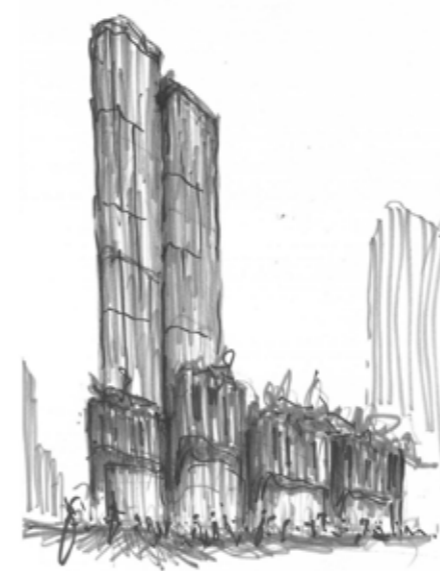
The Fender Katsalidis team is revered in the industry for their contributions to the built environment and their unwavering commitment to design excellence. They understand the importance of their role in shaping the future of our cities, and consider in great detail the lives of the people who will live, work and move through the spaces they create. This level of care and passion has been brought to Marquet & Mary, with a design that is - like all their work - innovative, sustainable and enduring.

## THE AWARD-WINNING DESIGN

The winner in a prestigious design excellence competition, Fender Katsalidis' vision for Marquet & Mary was to elevate the Rhodes skyline with a sophisticated structure that seamlessly blends residential and commercial spaces, playing a pivotal role in the revitalisation of the Rhodes area.

The City of Canada Bay Council's Design Jury praised FK's design for its "elegant internal apartment layouts, rhythmic vertical facade, and refined tower form, complemented by a human-scaled podium design. The project features a central courtyard providing abundant light and natural ventilation, a public plaza at the southern entrance, and meticulous ground-level design."

This project underscores the firm's commitment to creating dynamic, livable urban spaces that enhance both the skyline and the community fabric.

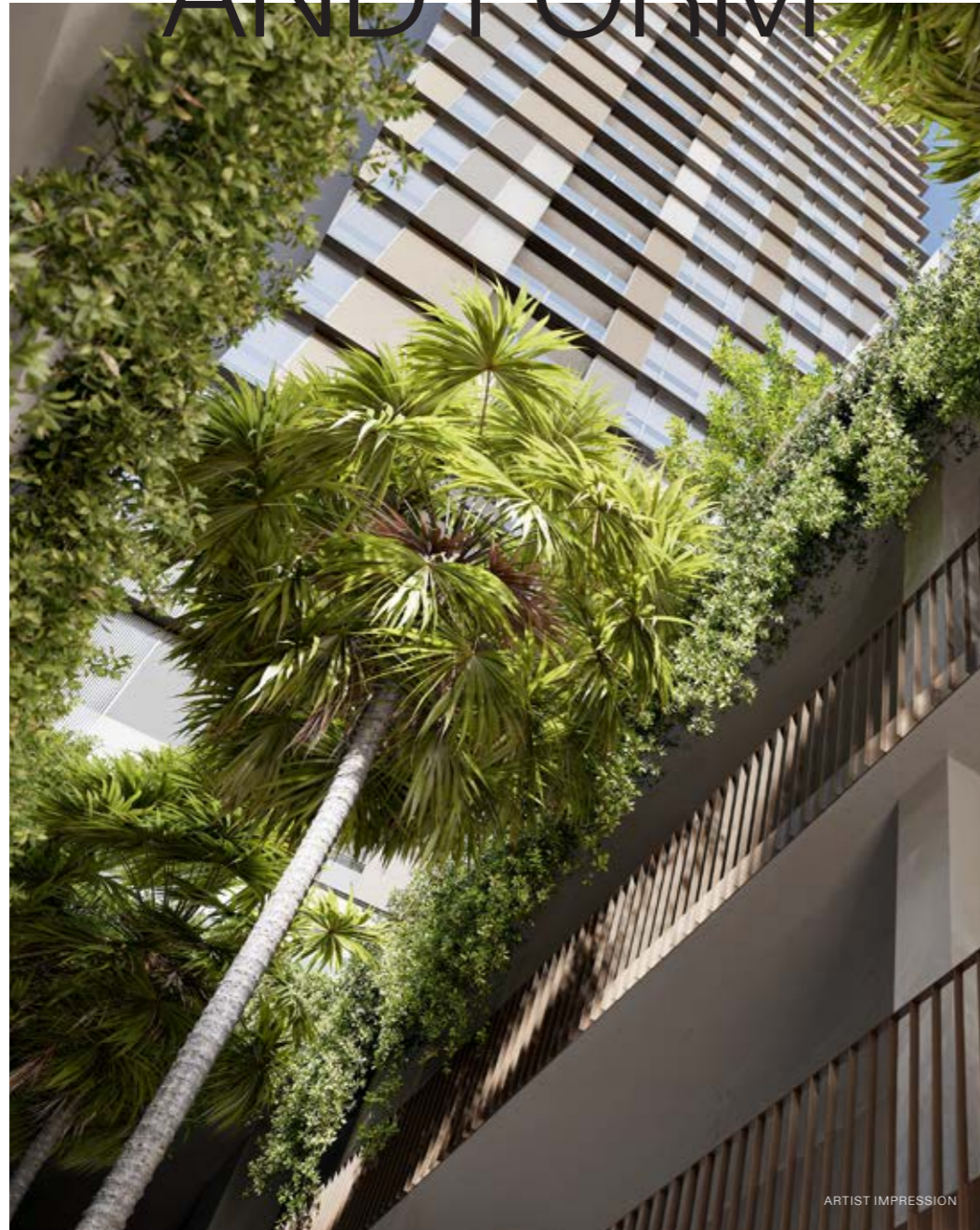


ARTIST IMPRESSION



ARTIST IMPRESSION

# LAND AND FORM



ARTIST IMPRESSION

## BRINGING NATURE & PEOPLE TOGETHER

Landscapes architects Land & Form are passionate about bringing nature and people together through carefully curated spaces and experiences. With each project they aim to deepen the connection people have with the natural world and with each other. As designers of public spaces, they create memorable environments where people like to spend time, helping to build a sense of community. Their work will seamlessly blend Marquet & Mary with Rhodes' tree-lined streets, further strengthening the connection with nature that the suburb already offers.



ARTIST IMPRESSION

MARQUET & MARY, RHODES



# MARQUET & MARY

RHODES SYDNEY



MARQUET & MARY BY DEICORP  
VISIT [MARQUETANDMARY.COM.AU](https://www.marquetandmary.com.au) OR CALL 1300 031 266

General disclaimer: The contents of this document have been prepared prior to completion of detailed design and construction of Marquet & Mary. Images depicting interiors and exteriors (including view lines) are intended as a guide only and are artist's impressions of how the development may appear when completed. The actual appearance, style and configuration of the elements of the development may vary without notice and may not be identical or similar to the images shown. As such, this material does not constitute a representation by the Developer, Vendor or the Agent in respect of the actual size, form, dimensions, specifications or layout of the apartments or other parts of the building. Deicorp does not accept responsibility for any action taken by intending purchasers in reliance on the information in this document. The final product may vary from the images shown. Images are artist's impressions only, fixtures and finishes are subject to change and furniture is not included unless otherwise stated in the contract for sale. Any view lines shown are indicative only as at the date of publication. Actual views from each apartment may vary on completion from that shown. View lines may be impacted by current and future development applications. Changes may be made to the detailed layouts during development and construction in accordance with the provisions of the contract for sale or planning or authority requirements. Prospective purchasers must make and rely on their own enquiries.

Whilst Deicorp endeavours to ensure that the information in this brochure is correct, no warranty, express or implied, is given as to its accuracy. Nothing in this document constitutes specific technical, financial or investment advice and prospective purchasers are advised to seek their own independent advice based on their specific circumstances. Prepared by Deicorp Projects (Rhodes) Pty Ltd - July 2024. Designed by Brand & Co.