

THE ROTHSCCHILD

ROSEBERY



A MODERN HERITAGE IS BORN

THE ROTHSCHILD

Deicorp is proud to introduce The Rothschild Rosebery.

*This is an address where history and character are celebrated, and
the very best of urban convenience is right at your doorstep. In
collaboration with award-winning architect Candalepas & Associates,
Deicorp is proud to be delivering a bold, architectural classic set to
stand the test of time and become a striking new addition to Sydney's
most creative, connected and walkable neighbourhood.*



A walkable tree-lined metropolis.

The Rothschild Rosebery is a lifestyle-led precinct nestled on the fringe of Australia's most vibrant capital city.

When you live at The Rothschild, everywhere you want to be, everything you want to explore is just minutes away. Rosebery is rich with European influences and in close proximity to the CBD, Eastern beaches, Sydney Airport, and other local transport connections including Green Square train station.

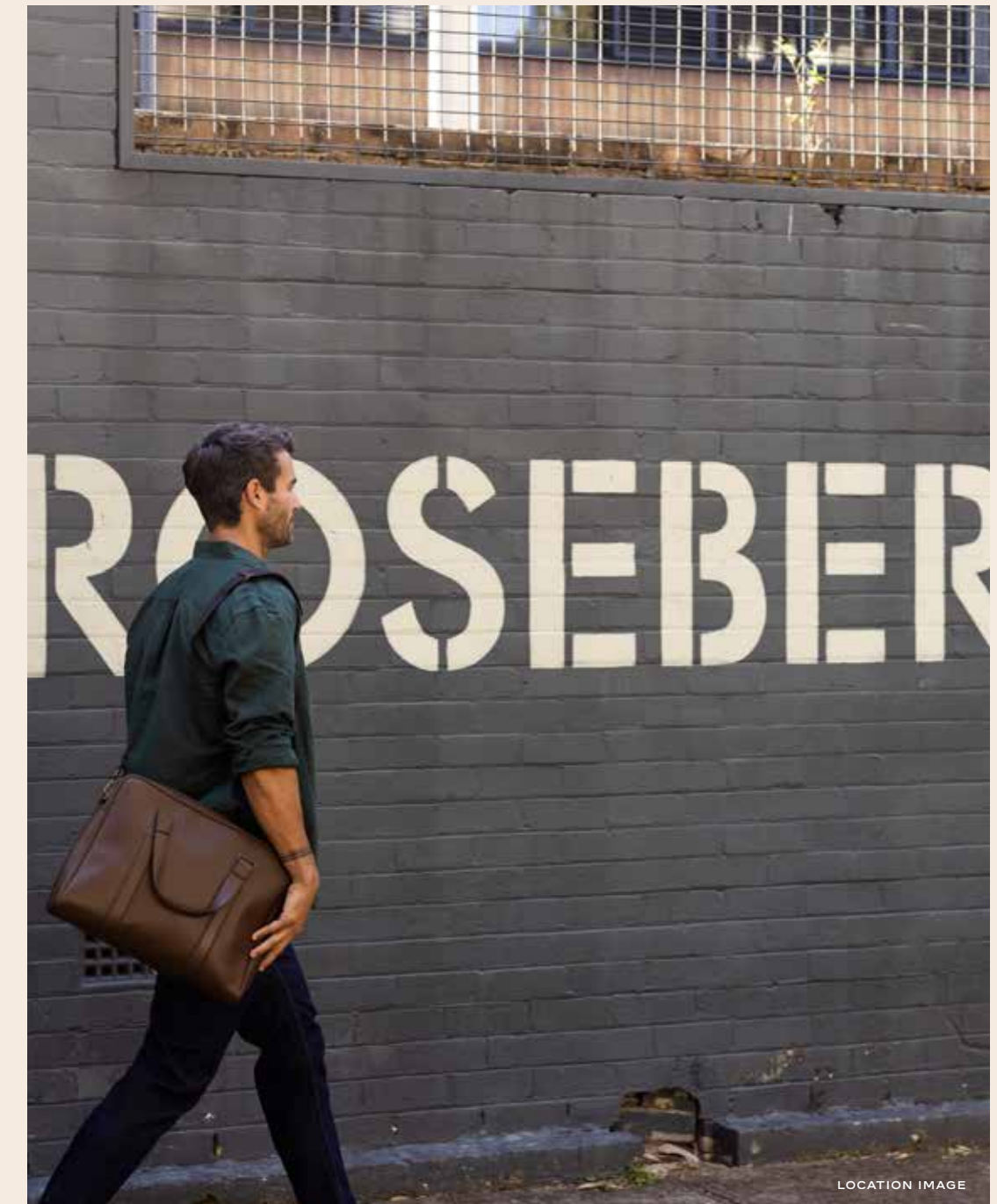


PUBLIC TRANSPORT OPTIONS FOR WORK AND PLAY

EVERYTHING AT YOUR DOORSTEP

With Waterloo's Danks Street, The Cannery and Alexandria just a stone's throw away, The Rothschild is the ideal location to live, work, play and shop. You can access all of these desirable locations by foot:

- *The Cannery (550m)*
- *Turruwul Park (650m)*
- *Gunyama Park (550m)*
- *The Grounds, Alexandria (1.3km)*
- *Danks Street (2km)*
- *Sydney Park (1.9km)*
- *Kimberly Grove Reserve (850m)*
- *The Australian Golf Club (1.1km)*
- *Green Square Station (950m)*



THE CANNERY HAS EVERYDAY CONVENIENCES UNDER THE ONE ROOF



THERE'S ALWAYS SOMETHING TO EXPLORE



LEAFY-GREEN OUTLOOKS SPEAK TO THE SOUL



SO MANY SPACES TO UNWIND IN NATURE

The Cannery. A place to eat, drink and play.



HEALTHY LIVING OPTIONS MADE EASY



A WIDE RANGE OF VINO FOR TONIGHT'S DINNER



THERE'S ALWAYS TIME FOR A CONE OF MESSINA

A ONE STOP HUB FOR HOME, HEALTH & LIFESTYLE

From soup factory to on-trend village, The Cannery is now a food and drink mecca home to Wholefoods House, casual eateries, wine bars and some of Sydney's most established restaurants, like Da Maria and Three Blue Ducks.

Other lifestyle conveniences include Jyle Frame Hair, Pearly & Beauty Nail Salon, and Dapper Don Barbershop. Plus there's opportunity to make new business connections at CoHouse Studios, the resident co-working space.



THE CANNERY, MENTMORE AVENUE



CONNECTED OPEN SPACES



**EVERYTHING
YOU LOVE JUST
MINUTES AWAY.**

The Rothschild Rosebery is one of Sydney's prime lifestyle locations. Central to an abundance of everyday amenities and foodie hotspots, you're always connected to everything you need within minutes.



ARTIST IMPRESSION

RESIDENCES



ARTIST IMPRESSION

An architectural statement uniting past, present and future living.

Designed by Award-Winning Architect, Angelo Candalepas, The Rothschild Rosebery is a distinct residency fusing the post-industrial era with elevated contemporary design.

Post-industrial beauty meets new world class.

THE ARCHITECTURE

Replacing longstanding industrial factories, The Rothschild Rosebery has been architecturally designed to house 176 apartments across two buildings on Rothschild and Mentmore Avenues. This captivating Candalepas residency emanates European influences with purposeful design features, including 2 levels of basement parking, multiple outdoor areas and a ground level retail offering. It boasts an elegant lifestyle that is aesthetically pleasing and speaks to the heart of everyone who encounters it.



STYLISH AND SOPHISTICATED LIVING

Presenting contemporary open plan living areas, these low maintenance residences quickly become the place you love to unwind.



The heart of every home.

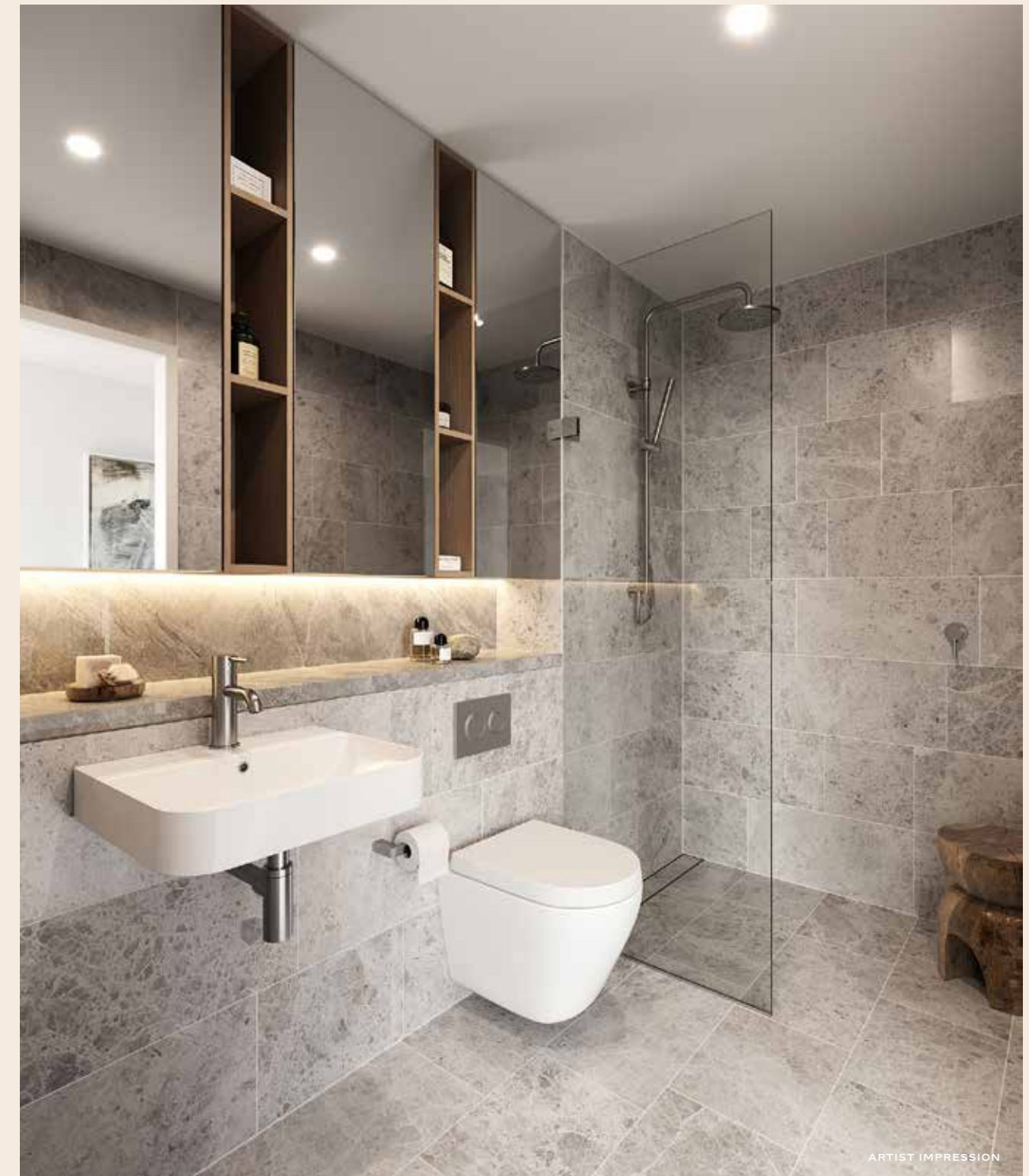
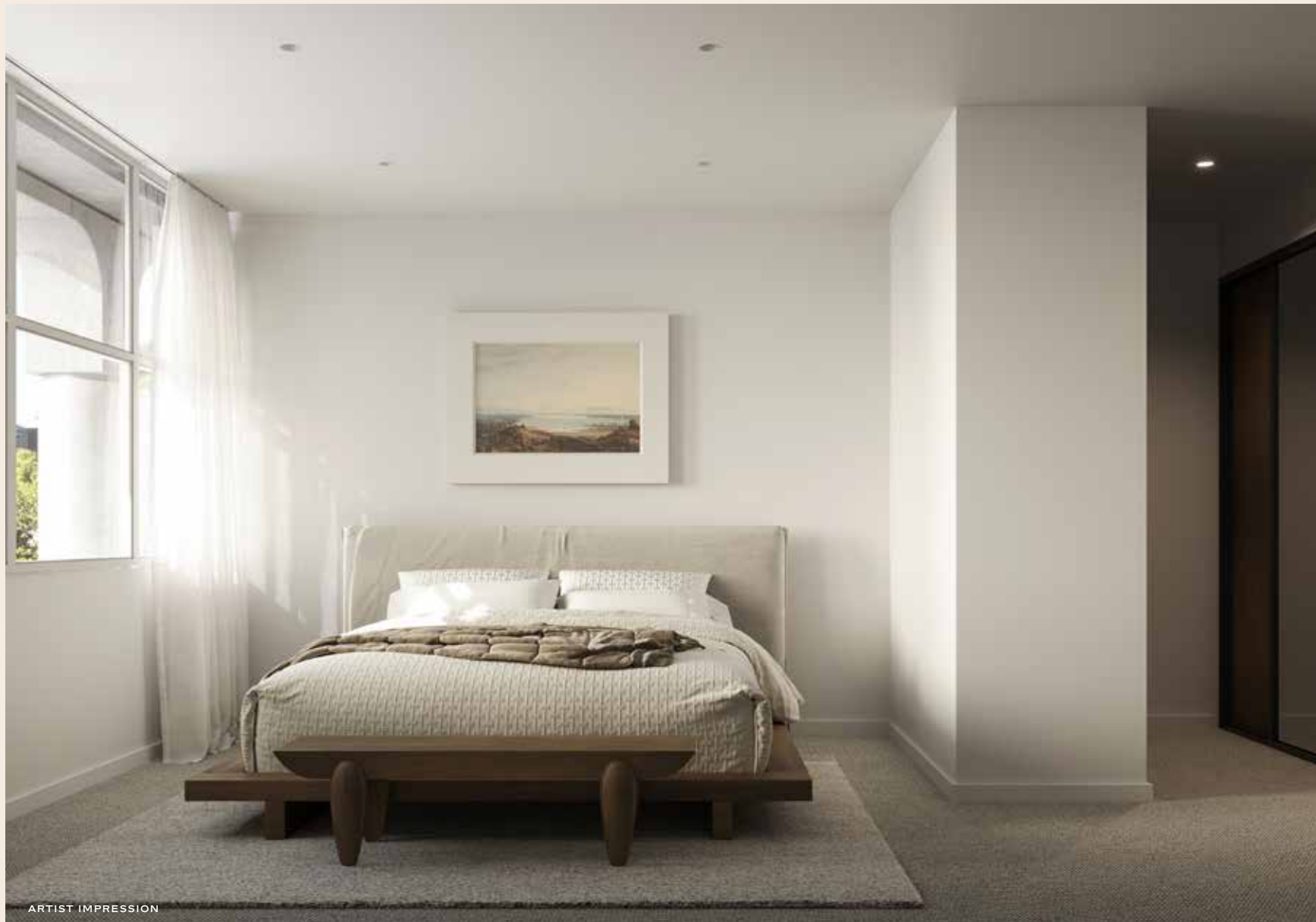
THE INTERIORS

A KITCHEN FOR EVERYONE

Whether you're an entertainer, budding chef or have a growing family, The Rothschild's residences feature kitchens that cater to everyone's needs. The sleek lines include ample bench space and plenty of storage, and are fitted with modern European appliances.



Making home
an inviting
sanctuary.



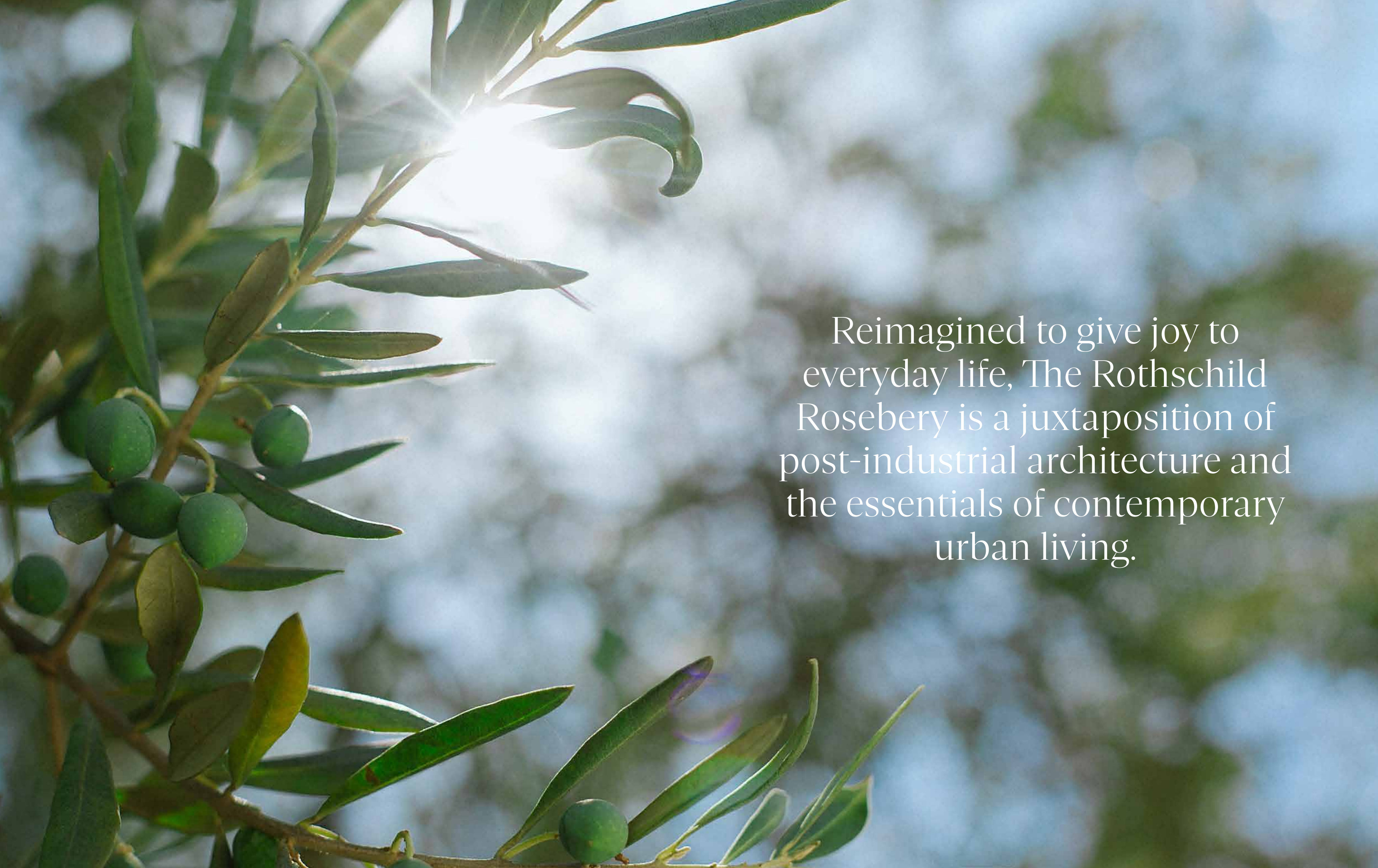
INTELLIGENT & FUNCTIONAL DESIGN

Bedrooms are ample in size and located in quiet zones to promote the best possible night's rest. While bathrooms are functional, sleek and maximise space with mirrored cabinetry. All interiors feature contemporary finishes, which evoke a classic and tasteful ambience.

OPEN SPACES

Revel in chic light filled living spaces that keep you connected with the world outside.



A close-up photograph of an olive branch with several green olives. The branch enters from the left side of the frame. The background is a soft-focus view of a blue sky with white clouds. A bright sun flare is visible in the upper left quadrant, partially obscured by the leaves of the branch. The overall mood is bright and natural.

Reimagined to give joy to
everyday life, The Rothschild
Rosebery is a juxtaposition of
post-industrial architecture and
the essentials of contemporary
urban living.

Communal courtyard designed to connect residents.

Inspired by the French Hotel Beauvais, The Rothschild's courtyard provides ample space for pleasure or business. With a skilfully landscaped space and an olive grove at its centre, the perfectly designed courtyard creates a communal oasis for residents and visitors, encouraging connection, community and creative thinking. It's a desirable place to relax, interact and play.





ARTIST IMPRESSION

The Rothschild
Rosebery. Where
lifestyle comes first.



Flourishing urban retail hub.

RETAIL HUB

AN EASY AND CONVENIENT LIFESTYLE

There's a lot of amenity options within The Rothschild, such as the rooftop, courtyard and communal areas, as well as the retail space beneath the residential apartments. You'll also have East Village Shopping, Woolworths Metro Rosebery and Wholefoods House all within walking distance of home, so you don't have to plan every minute of your week. These retail conveniences allow you to live in the moment.



ARTIST IMPRESSION



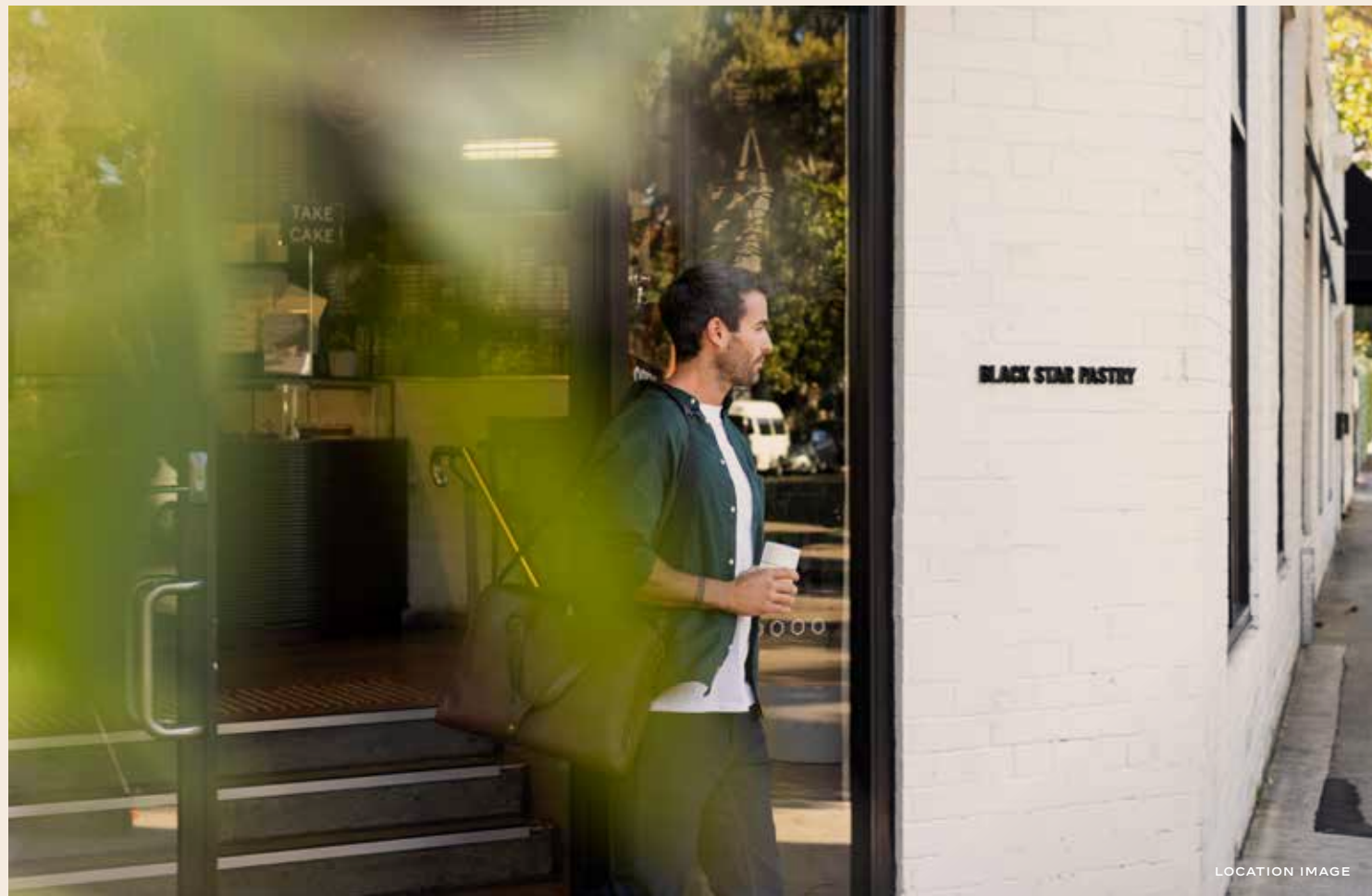
LOCATION IMAGE

LIFESTYLE



LOCATION IMAGE

The Rothschild is more than just apartments, it's a lifestyle destination connecting like-minded people through food, culture and work.



BLACK STAR PASTRY, WORLD'S MOST INSTAGRAMMED PASTRIES

A VIBRANT CAFE CULTURE

You'll be spoiled for choice with a plethora of cafes and casual eateries in this blossoming foodie hotspot. With Mentmore & Morley, Sub-Station Cafe, 5th Earl and Black Star Pastry just a walk away, be prepared to have multiple favourites!



SWEET TREATS MADE DAILY



MOUTH WATERING CAKES TOO PRETTY TO EAT

Dine in. Dine out.
There is something for all.

A TREASURED COFFEE BREAK IN AN OLD ELECTRICAL STATION



A haven for the trendspotter.



HOMEWARES FOR EVERYONE



FOR HIM. FOR HER. YOU'LL FIND IT HERE

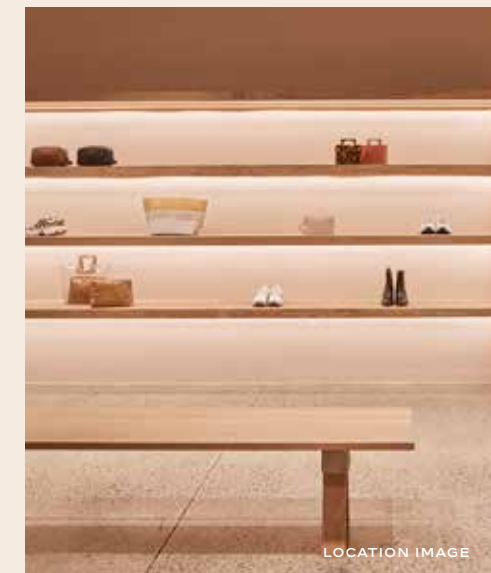
LATEST TRENDS FROM LEADING LABELS



LOCATION IMAGE



DELIGHT IN HIGH-END STYLE CHOICES



CHOOSE FROM CHIC DESIGNERS



FRIDAY NIGHT OUTFIT FOUND IN MINUTES

You'll only have to stroll the tree-lined sidewalks to discover the latest trends by Camilla and Marc, Zimmerman, White Fox, Industrie, Incu Rosebery, Coco Republic, Cosh Living and more.

A fashionista's
playground.



A leafy-green outlook for a positive mind.



LOCATION IMAGE

BEAUTIFUL GARDENS, PARKS AND QUIET SPACES TO RECHARGE



LOCATION IMAGE

THE BEST PICNIC SPOTS



LOCATION IMAGE

HAVE SOME FUN OR BRING OUT YOUR A-GAME

A NATURAL HUB OF HUMAN ACTIVITY

Wellness and community—two vital ingredients for a healthy life. Swim a few laps at the Gunyama Park Aquatic and Recreation Centre. You can stroll or bike through the luscious Turruwul Park. Sweetacres Park is set up for picnics with BBQ facilities and Matron Ruby Grant Park provides the best entertainment for kids.

If you fancy the latest in holistic therapies SomniWell provides integrative natural health services and Body WRL is the place to indulge in infrared sauna. With a variety of fitness centres like Hiit Pilates, F45, The Movement Academy, Fire Fit Studios and Virgin Active, there's something for everyone to stay active.



LOCATION IMAGE

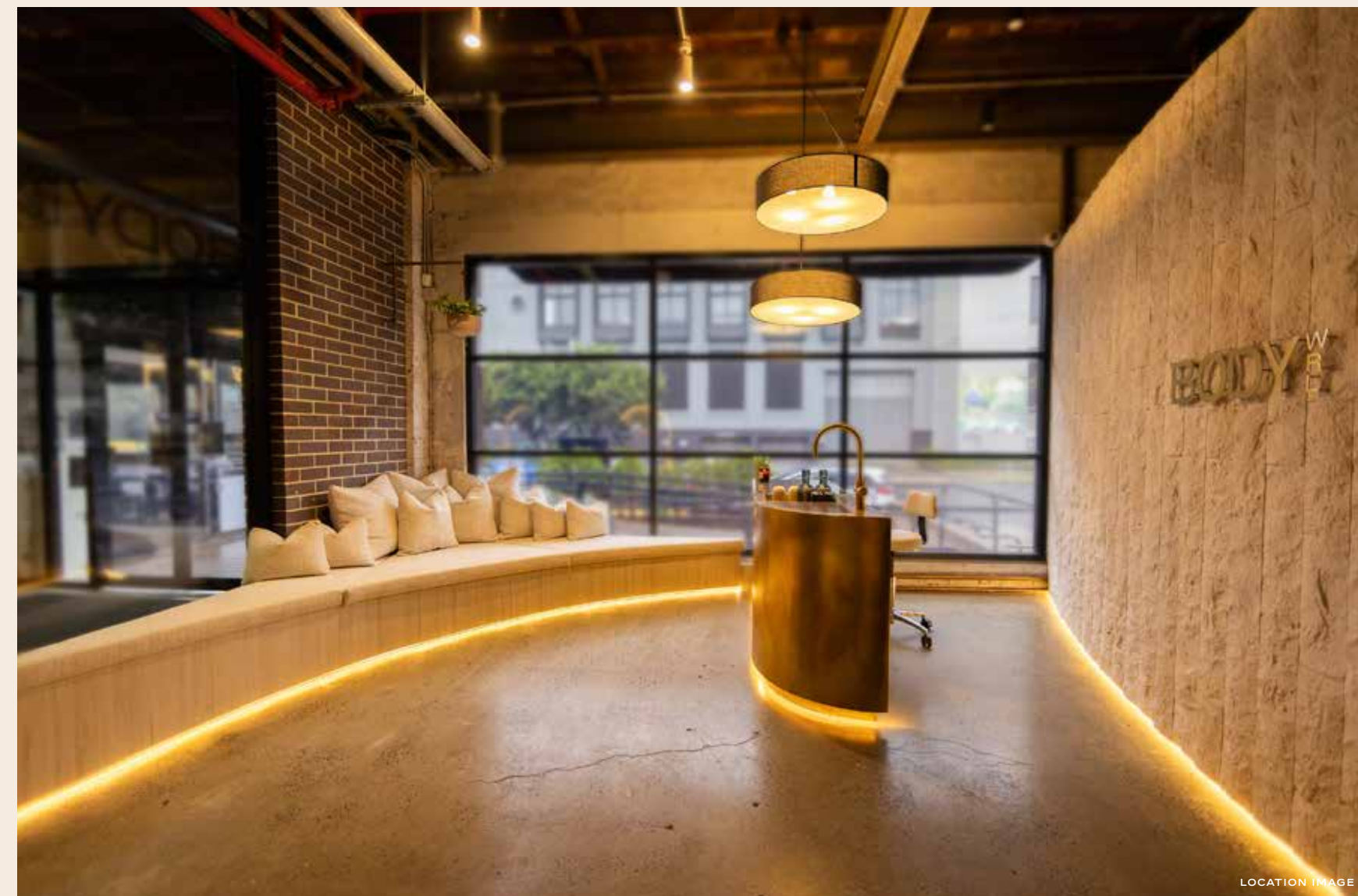
NEW TRACKS TO DISCOVER DAILY



LOCATION IMAGE

COOL OFF. KEEP FIT. OR BOTH

RE-ENERGISE WITH HOLISTIC THERAPIES OR A SPORTS MASSAGE



LOCATION IMAGE

Foodie adventures and dining delights.



SAVOUR LOCAL INGREDIENTS WITH MIND-BLOWING FLAVOURS AT FOODIE HOTSPOT, COOH



GIN LOVERS PARADISE



PINO'S VINO E CUCINA IS LIKE A WEEKLY TRIP TO ITALY

YOUR DINING BUCKET LIST BEGINS HERE

From Rosebery to Alexandria you'll find a bustling dining scene with Asian, European and Modern Australian influences. Whether you fancy an upmarket meal at Archie Rose, clean eating brunch at Three Blue Ducks or a traditional Italian dinner at Pino's – everything you want exists in these emerging foodie hubs. And often in reimagined warehouse spaces!



YOUR LOCAL IS ALSO AUSTRALIA'S MOST AWARD WINNING DISTILLERY

LOCATION IMAGE



FINEST MIXOLOGISTS AT YOUR SERVICE



SUNDAY BRUNCH IS BEST AT THE THREE BLUE DUCKS

The Rothschild.

Rosebery's most enviable location of convenience.

EAT & DRINK

- 01 Moon and Back
- 02 Mentmore & Morley
- 03 Sub-Station Rosebery
- 04 Black Star Pastry
- 05 Three Blue Ducks
- 06 Archie Rose Distilling Co
- 07 5th Earl
- 08 L'Americano Espresso Bar
- 09 COOH Alexandria
- 10 Grounds of Alexandria
- 11 Frenchies Bistro & Brewery
- 12 Grain Organic Bakery
- 13 Simon Johnson Providore
- 14 Haven Cafe
- 15 Allpress Espresso Café & Roastery

HEALTH & RECREATION

- 29 Gunyama Park Aquatic and Recreation Centre
- 30 Matron Ruby Grant Park
- 31 Sweetacres Park
- 32 Turruwul Park
- 33 Tarakan Reserve Dog Park
- 34 Hiit Pilates
- 35 F45 Training
- 36 Fire Fit Studios
- 37 Snap Fitness Zetland
- 38 The Movement Academy
- 39 Virgin Active Zetland
- 40 The Australian Golf Club

SHOPPING & LIFESTYLE

- 16 Woolworths Metro Rosebery
- 17 East Village Shopping Centre
- 18 Wholefoods House
- 19 Camilla and Marc
- 20 Incu Rosebery
- 21 Coco Republic
- 22 Space Furniture
- 23 Cosh Living
- 24 Sarah & Sebastian
- 25 Qpet Rosebery
- 26 Supa Centre Moore Park
- 27 Zimmerman
- 28 Alexandria Homemaker Centre

TRANSPORT & EDUCATION

- 41 Green Square Train Station
- 42 Rothschild Ave Bus Stop
- 43 New Waterloo Metro Station
- 44 Sydney Airport
- 45 Gardeners Road Public School
- 46 Eastlakes Public School
- 47 Green Square Library
- 48 Joynton Avenue Creative Centre
- 49 Playbright Early Learning Centre
- 50 Papilio Early Learning
- 51 Learn & Laugh Early Learning
- 52 Kids Club Child Care





ARTIST IMPRESSION

THE TEAM



A collaboration
of great minds.

LOCATION IMAGE

The Rothschild Rosebery: Residences that promote
sophisticated living through thoughtful design.
Make one yours today.

Developing desirable new homes designed for living in the best locations across Sydney.

Founded in 1999, Deicorp is a privately-owned Australian property development and construction group with expertise in residential, commercial and retail property. With a commitment to securing the best sites for our projects, Deicorp is recognised as Sydney’s leading builder of transport-connected developments. For our customers, this means Deicorp offers complete confidence and peace of mind, ensuring every apartment delivers outstanding value, security, convenience and quality of life.

That’s why for more than two decades, Deicorp has designed, developed and delivered more than 8,000 apartments across 40 Sydney suburbs.

Deicorp delivers an end-to-end service for purchasers with our leading construction and development industry team

who work seamlessly together on every project. We manage site acquisition, planning and design, construction, sales and client care with our dedicated team of 200 industry professionals.

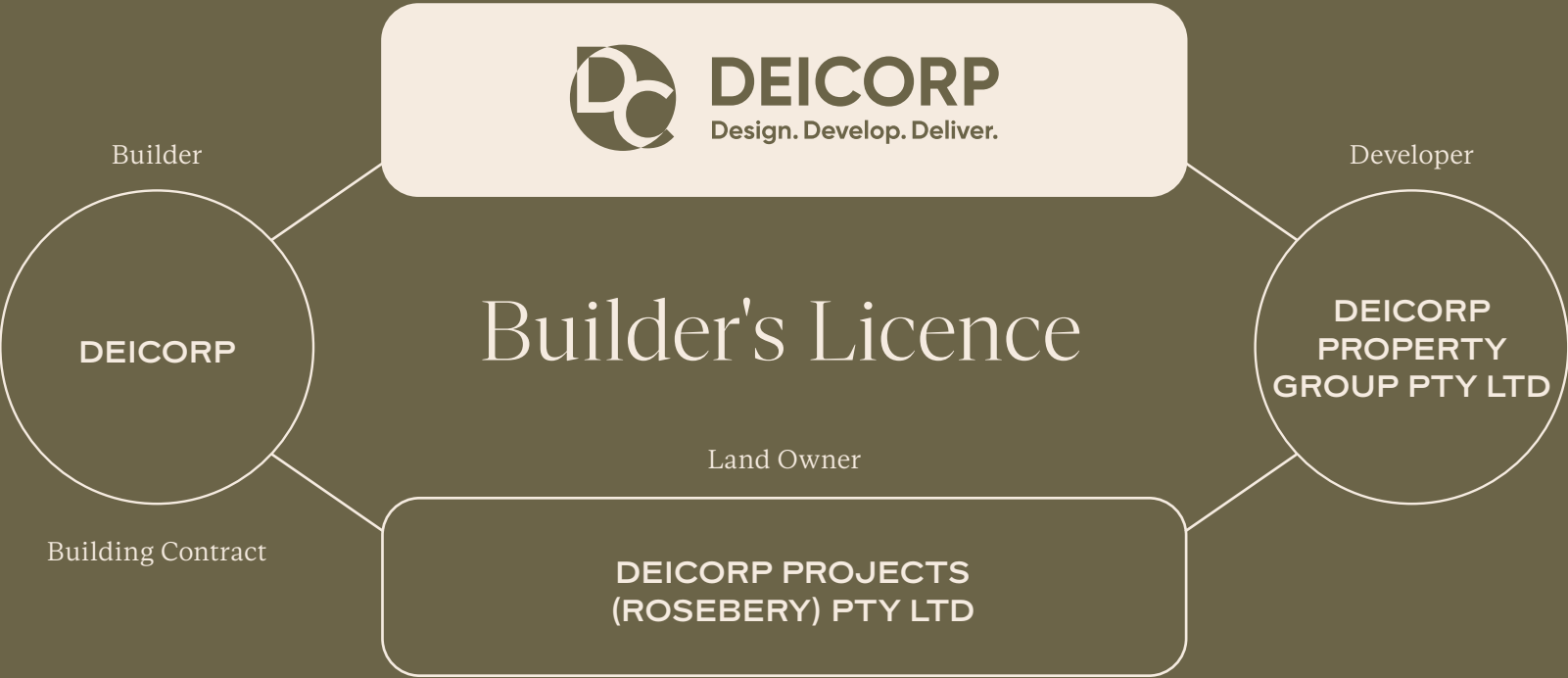
As a respected and successful company, Deicorp is committed to strengthening the communities we work in. It’s why we established our charitable and sponsorship program – Deicorp Community, to help us build hope and opportunity, while creating a legacy of stronger, more resilient communities.

And as the first developer in NSW to be iCIRT rated, our buyers have confidence and peace of mind that they’re dealing with trusted industry professionals with a strong reputation and proud track-record.



Deicorp’s Construction Team bring decades of industry-leading experience

THE TEAM



The Petersham Precinct, Petersham
— 357 units + RSL Club



Hyde Metropolitan by Deicorp, Sydney
— 168 units + 4,000sqm Retail



Tallawong Village, Rouse Hill
— 987 units + 7,500sqm Retail



Hills Showground Village, Castle Hill
— 430 units + 9,500sqm Retail



TRANSPORT CONNECTED

Always walking distance to public transport



AWARD-WINING TEAM

3,000 + apartments under construction



SYDNEY EXPERTS

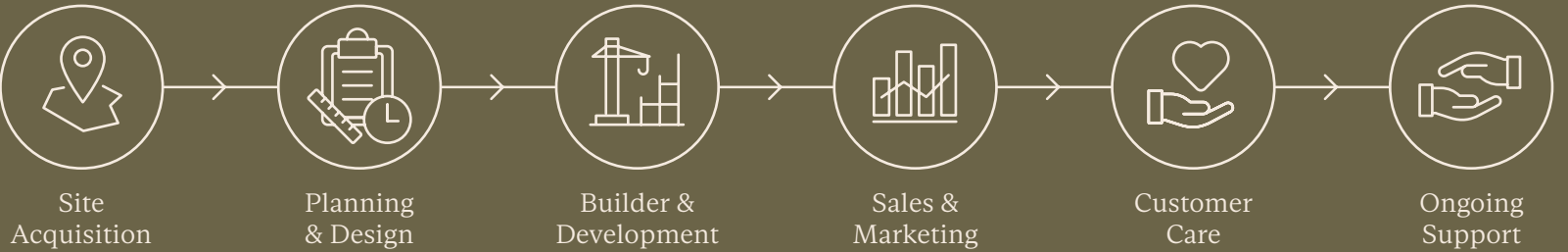
40+ developments across the Sydney region



8000+ APARTMENTS

...and counting...

END-TO-END SERVICE



PROUDLY AUSTRALIAN

Owned and operated



DESIGNED FOR LIVING

\$3.5bill invested in construction



SEAMLESS JOURNEY

From sales to post-settlement and customer care



21+ YEARS

Track record of success with a single builder's license

Candalepas Associates is an award-winning architectural firm based in Sydney and Melbourne.

Candalepas Associates

Named one of the 100 most interesting emerging architectural firms in the world and one of the top 10 firms in Australia, Candalepas Associates brings great depth and refinement to this signature new city building.

The careful hand of Director Angelo Candalepas is seen throughout The Rothschild, Rosebery – from its towering castle-like form to the generous proportions of its luxury residences.

The award-winning architectural practice has an accomplished portfolio of work published both within Australia and internationally.

Recently, Candalepas Associates produced the winning design for The Fox: NGV Contemporary. The firm will lead the design for this once in a generation landmark and Australia's soon to be largest gallery dedicated to contemporary art and design. The National Gallery of Victoria describes the design as awe-inspiring and timeless, creating a powerful and sophisticated work of contemporary Australia architecture for the people of Victoria.

Established in 1999, Candalepas Associates has received a significant number of awards from the Australian Institute of Architects including the Sulman Medal for Public Architecture in 2009 and 2018, the Frederick Romberg Award for Residential Architecture - Multiple Housing in 2011, the Harry Seidler Award for Commercial Architecture in 2016 and the Aaron Bolot Award for Residential Architecture - Multiple Housing in 2011, 2013, 2017 and 2019. In 2016 Candalepas was also awarded the NSW Premier's Award for Architecture.



DESIGN. DEVELOP. DELIVER.

“The Deicorp team is committed to delivering the highest standards in everything we do. From site selection to design and construction, sales and customer care, we give every buyer peace of mind that they’ve made a smart choice.”

FOUAD DEIRI OAM
FOUNDER & CHAIRMAN



Candalepas Associates

THEROTHSCHILD.COM.AU ▪ 1300 219 453

The contents of this document have been prepared prior to completion of detailed design and construction of The Rothschild. Images depicting interiors and exteriors (including view lines) are intended as a guide only and are artist's impressions of how the development may appear when completed. The actual appearance, style and configuration of the elements of the development may vary without notice and may not be identical or similar to the images shown. As such, this material does not constitute a representation by the Developer, Vendor or the Agent in respect of the actual size, form, dimensions, specifications or layout of the apartments or other parts of the building. Deicorp does not accept responsibility for any action taken by intending purchasers in reliance on the information in this document. The final product may vary from the images shown. Images are artist's impressions only, fixtures and finishes are subject to change and furniture is not included unless otherwise stated in the contract for sale. Any view lines shown are indicative only as at the date of publication. Actual views from each apartment may vary on completion from that shown. View lines may be impacted by current and future development applications. Changes may be made to the detailed layouts during development and construction in accordance with the provisions of the contract for sale or planning or authority requirements. Prospective purchasers must make and rely on their own enquiries. Whilst Deicorp endeavours to ensure that the information in this brochure is correct, no warranty, express or implied, is given as to its accuracy. Nothing in this document constitutes specific technical, financial or investment advice and prospective purchasers are advised to seek their own independent advice based on their specific circumstances. Prepared by Deicorp Projects (Rosebery) Pty Ltd - January 2023.

THEROTHSCHILD.COM.AU
1300 219 453



DEICORP
Design. Develop. Deliver.

THE ROTHSCHILD ROSEBERY BY DEICORP